

- [Shop](#)
- [Support](#)
- [Participate](#)

1 2 [Next >](#)

[Print Share](#)  
[Dell.com](#) > [Community](#) >

Q

Dell Community  All of Dell

# Latitude E6400 won't go to sleep

[Community Home](#)

[Forums](#)

[Tech Support Topics](#)

[Laptop](#)

[General Hardware](#)

[Common Links](#)

- [View all users](#)
- [Unread](#)



Sign in  
Sign in to post messages.

Page 1 of 2

**odinjurkowski**Joined on 01/07/2009  
Posts: 4  
Points 125**Latitude E6400 won't go to sleep**

07 Jan 2009 05:04PM

My work gave me a new Latitude E6400. They replaced Vista with XP so I don't know if that is a possible cause, but whenever I try to put the computer to sleep (whether stand by or even hibernate), it freezes. You can see that it is preparing to stand by, locks up, never powers down, and can't get out of it. I have to hold the power button down and force a shut down.

I've been over the power management options, updated and reviewed the Bios, but am not sure where to go next. Is it a driver issue? I would hate to have to try and replace/update each and every one.

Tags: [E6400 sleep](#)

Post Points: 50

[Reply](#) | [Del.icio.us](#) | [Digg](#) | [Reddit](#) | [Contact](#)1 2 [Next >](#)**Verified Answers**

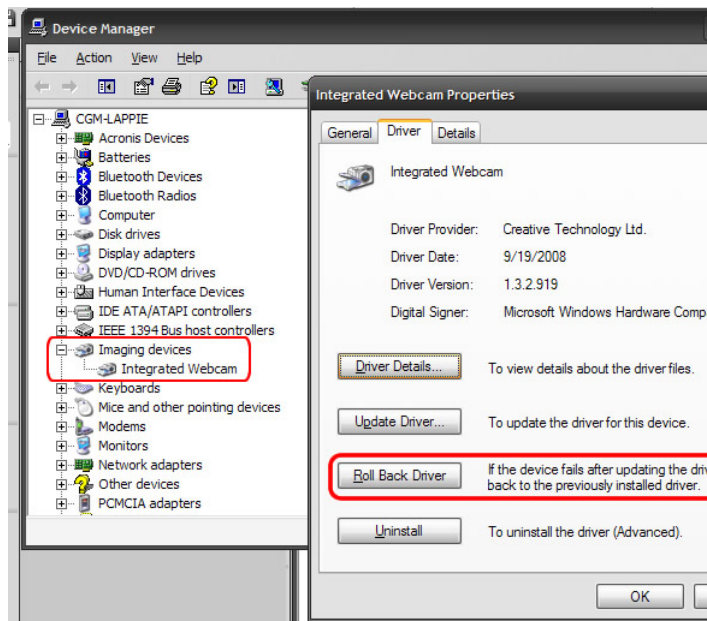
Solution

**ChrisSixPack**Joined on 01/08/2009  
Posts: 5  
Points 180**Re: Latitude E6400 won't go to sleep** ★★★★★

13 Jan 2009 01:13PM

I came across a solution to this problem!

The problem is that windows update installs updated drivers for the creative webcam. What you need to do is a driver rollback in device manager, ending up at version 1.3.2.919.



Good luck, hope this works!

Tags: [Dell Latitude freezes / hangs on suspend or hibernate. XP](#)

Post Points: 130

[Reply](#) | [Del.icio.us](#) | [Digg](#) | [Reddit](#) | [Contact](#)**21 Replies:**